



## OPERATION MANUAL

# SPARE PARTS SECTION

The following section covers the spare parts diagrams and lists that were current at the time this manual was originally printed. Due to continuous improvements of the machine, changes may be made at any time without notification.

### HOW TO ORDER SPARE PARTS

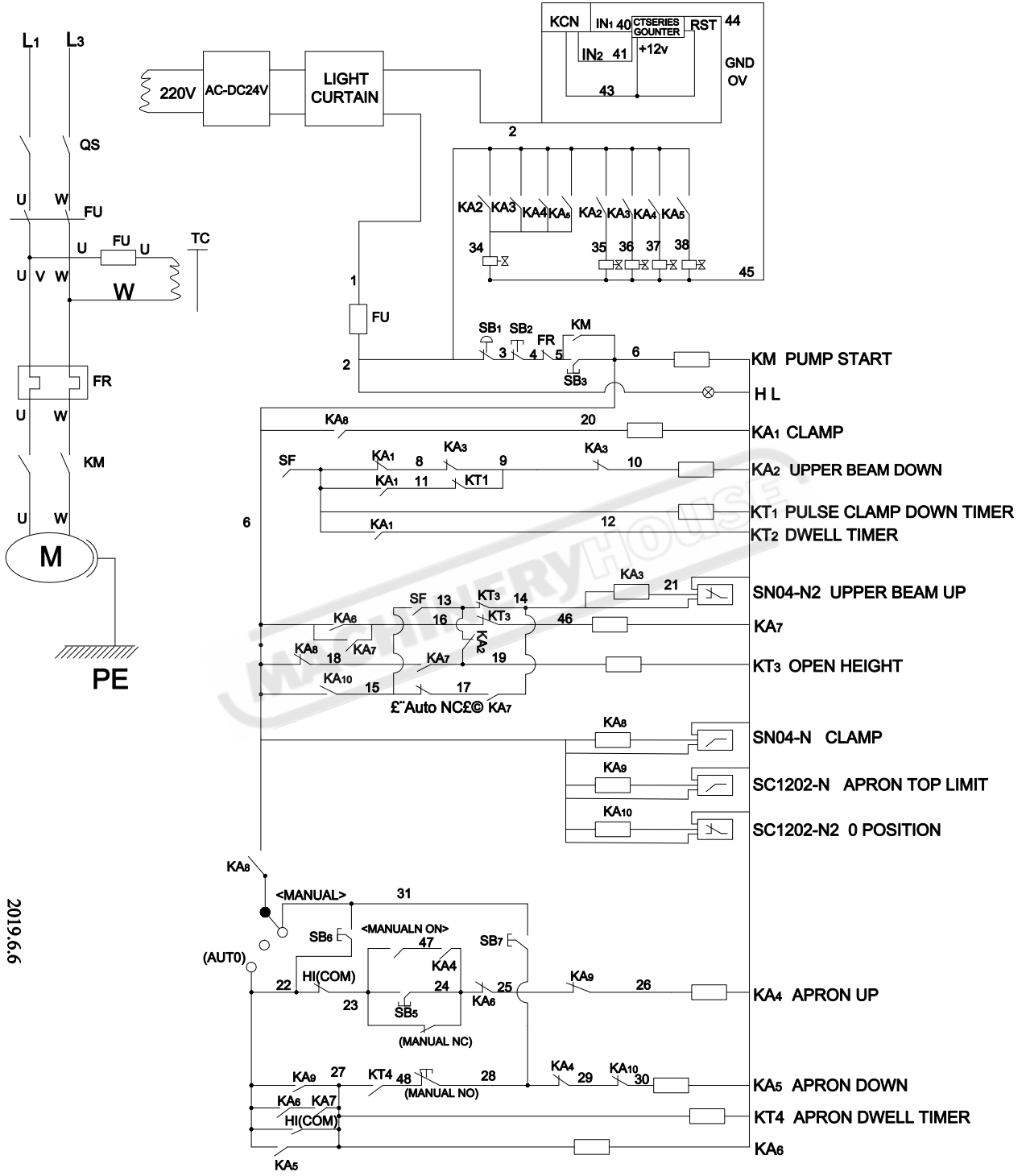
1. Have your machines **model number, serial number & date of manufacture** on hand, these can be found on the specification plate mounted on the machine
2. A scanned copy of your parts list/diagram with required spare part/s identified
3. Go to [www.machineryhouse.com.au/contactus](http://www.machineryhouse.com.au/contactus) and fill out the enquiry form attaching a copy of scanned parts list.





# OPERATION MANUAL

## ELECTRICAL DIAGRAM

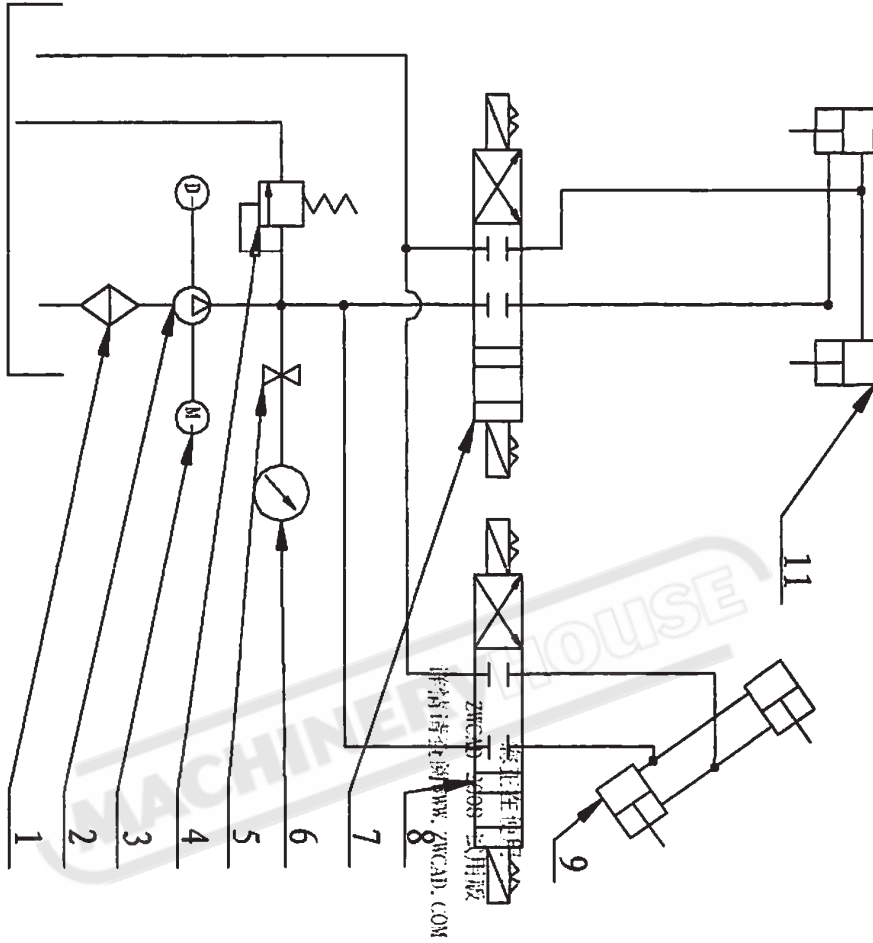


2019.6.6



**OPERATION MANUAL**

**HYDRAULIC DIAGRAM**



- 1. Filter
- 2. Motor 4KW/Y132S-4
- 3. Pressure Gauge Adjuster K-H6
- 4. Superposition of electromagnetic valve
- 5. Superposition of one-way valve
- 6. Leaf Oil Pump
- 7. Pressure Regulator Control Valve
- 8. Pressure Gauge YN-60
- 9. Folding Hydraulic Cylinder
- 10. On Beam Hydraulic Cylinder

Maximum Pressure 8 Bar